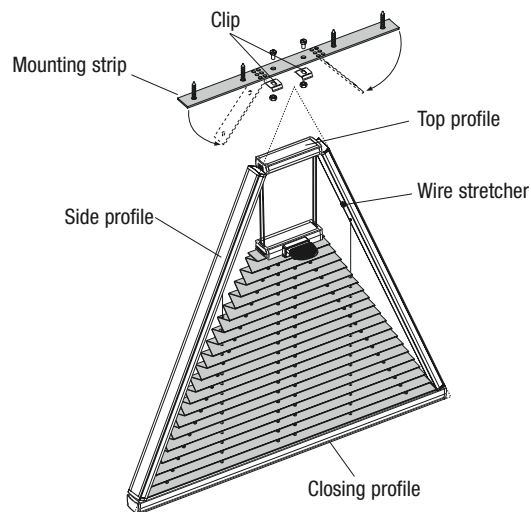


Mounting possibilities

Operation

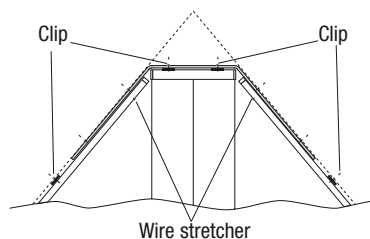
Pleated Blind

Tensioned triangular blinds



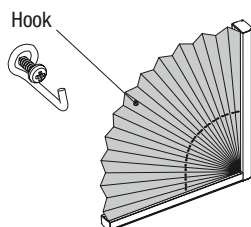
Fit the clips at the bottom and click in the closing profile. Screw the clips onto the mounting strip and bend down the end sections. Hold the mounting strip horizontally on the highest point and fit it. Fit the clips for the side profile. Click the top profile into the mounting strip. Click in the side profiles and adjust the wire stretcher with an angle screwdriver.

Clip positions and wire stretcher



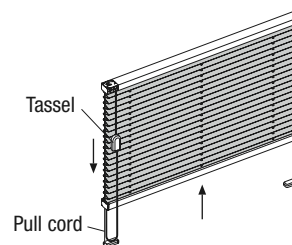
Fixed blinds

Fit the clips and click in the profiles. Fit additional hooks behind the position of the fabric rivets and insert the fabric.



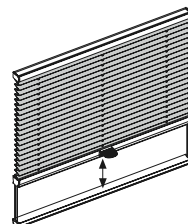
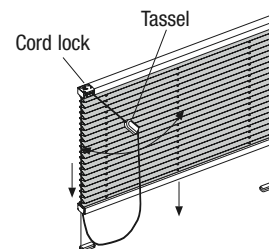
To open the hanging:

Pull the cord on the tassel downwards. When the tassel is released, the hanging stays in the desired position.

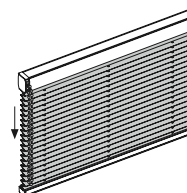


To close the hanging:

Pull the tassel to the middle of the hanging, guide it at an angle to the cord lock. The hanging closes. To keep the desired position of the hanging, release the tassel in the vertical position.



Tensioned pleated blind is closed and opened by moving the operating handle.



Pleated blind with a chain drive, the blind is closed or opened by pulling the front or rear chain respectively.

Note: In the case of motor operated blinds, please carefully observe the instructions on the installation sheet Electrical Installation.

Care

Thanks to a special manufacturing process, our fabric qualities are furnished with an antistatic finish and are therefore resistant to dust and dirt.

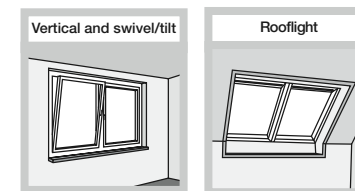
Occasional brushing with a soft brush or a feather duster is usually sufficient.

Please see the washing instructions for further information about how to care for your blinds.

Important! The chain drive is maintenance-free and must not be oiled.

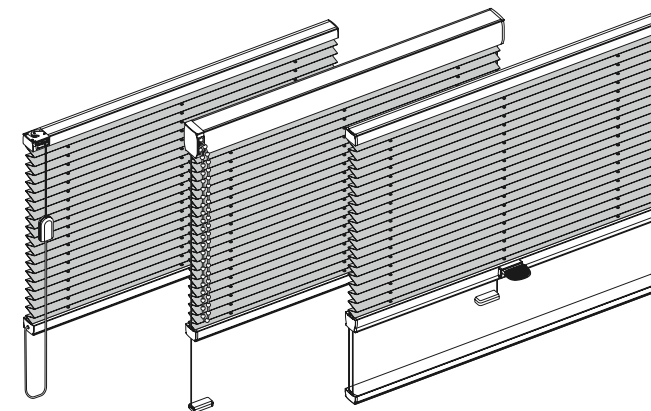
© 2006 BENTHIN • Copies – also of extracts – are only permissible with written consent • We reserve the right to make changes • Errors and omissions excepted • 27-11-2006 • 03001834

Installation – Operation – Care



Types

| | |
|---------------|---------------|
| P1100 - P1150 | P1000 - P1085 |
| P1200 - P1241 | P2400 - P2420 |
| P1300 - P1341 | P2402 - P2422 |
| P1400 - P1463 | P2415 - P2426 |



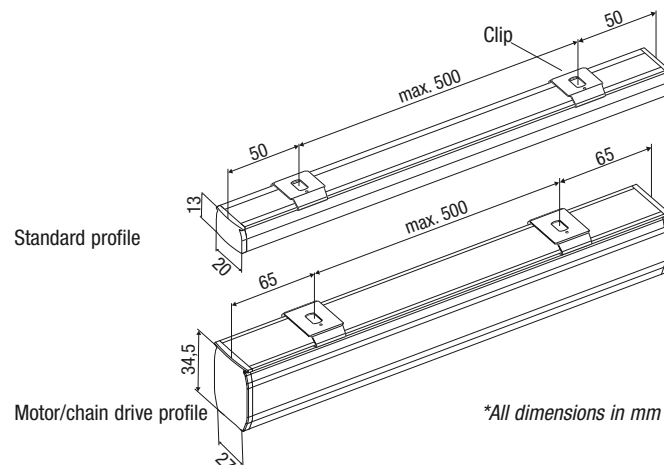
Dear Customer,

This dimensionally accurate pleated blind was produced especially for your requirements. High-quality materials and a design that is perfect in function and elegance guarantee a long service lifetime and thus ensure a great deal of pleasure in the bought product. Please read the following instructions carefully before installing the blind.

Your pleated blind manufacturer

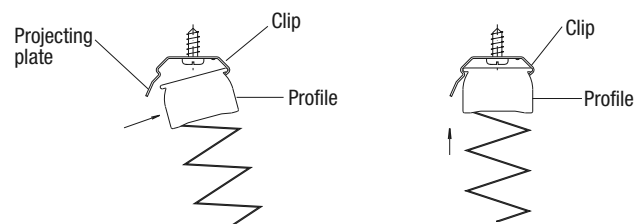
Clip mounting

When mounting the standard and motor/chain drive profile make sure that the distance between the clip and the end of the pleated blinds is 50 or 65 mm. **Mounting the pleated blind horizontally.** Use only one clip per cord and/or drilled hole.



Installation:

Insert the profile in the front edge of the clip and press the rear upwards (until it clicks).



Disassembly:

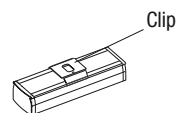
Press the projecting plate of the clip upwards to be able to remove the profile from the clip.

Mounting positions:

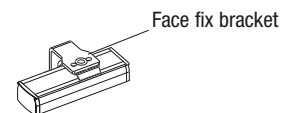
In the case of a ceiling/wall mounting, make sure that the height of the fabric pack does not collide the tilted or opened wing of the window.

Mounting possibilities

Ceiling mounting



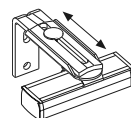
Wall mounting



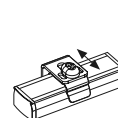
Wall mounting

with adjustable face fix bracket

Face fix bracket, large
60-108 mm

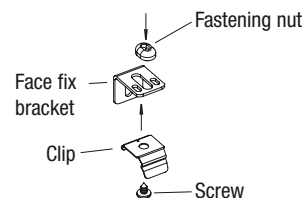


Face fix bracket, small
13-21 mm



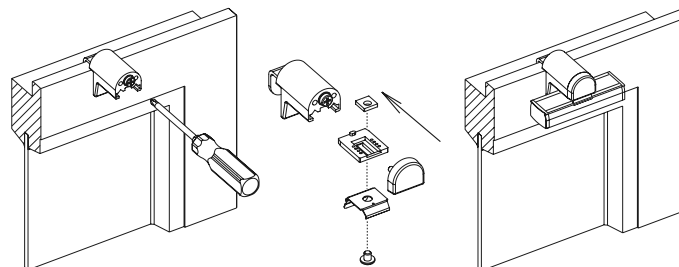
Clip mounting face fix bracket, small

Place the fastening nut into the guide of the face fix bracket at the top. Screw together with the clip from below.



Mounting on the wing of the window with block holder

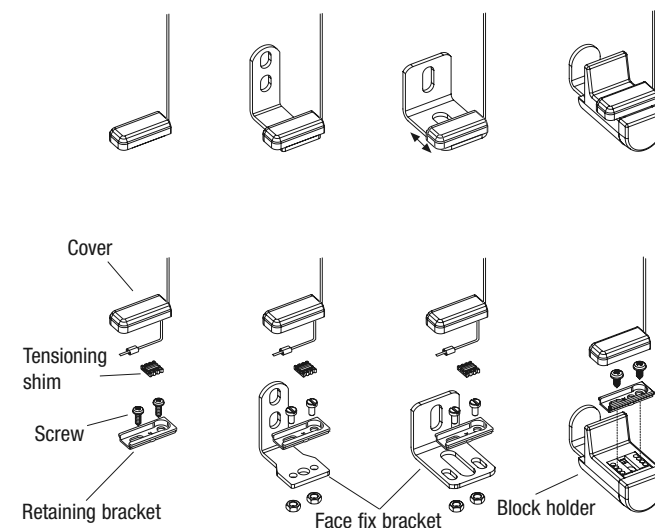
Fasten the block holder onto the wing of the window. Fasten the clip on the slider, push the slider into the groove of the block holder. Click the end cap on the block holder. Mount the pleated blind profile into the clip as it is shown in "Installation".



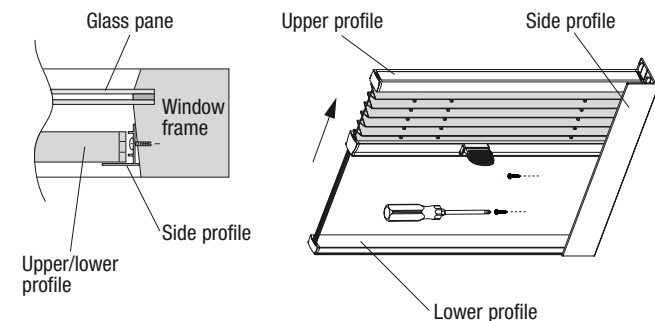
Mounting possibilities

Tension cord fixing element

Lower the pleated blind and mark the position of the tension cord fixing element. The retaining plate bracket is screwed directly on the block holder or on the face fix bracket. Push the cover over the retaining bracket. The tensioning shim serves to correct the cord tension.



Rooflight mounting with side profile



Put the side profile against the upper and lower profile, mark and fit it.
Mounting the side profile parallel to the pleated blind.

Important: Type P2400/P2410 (with tension feet) before putting the side profile against the blind profiles, you have to close the hanging.